



Wet Scrubber Tower for Odors Control



Introduction

Wet scrubber also called spray tower, purification tower, spray column. It is a new type of industrial waste gas treatment and processing equipment.

The principle is that the spray liquid and exhaust gas contact at the same time using the packing layer to change the flow direction and flow rate, so as to increase the contact surface, the acid and alkali exhaust gas neutralization absorption.

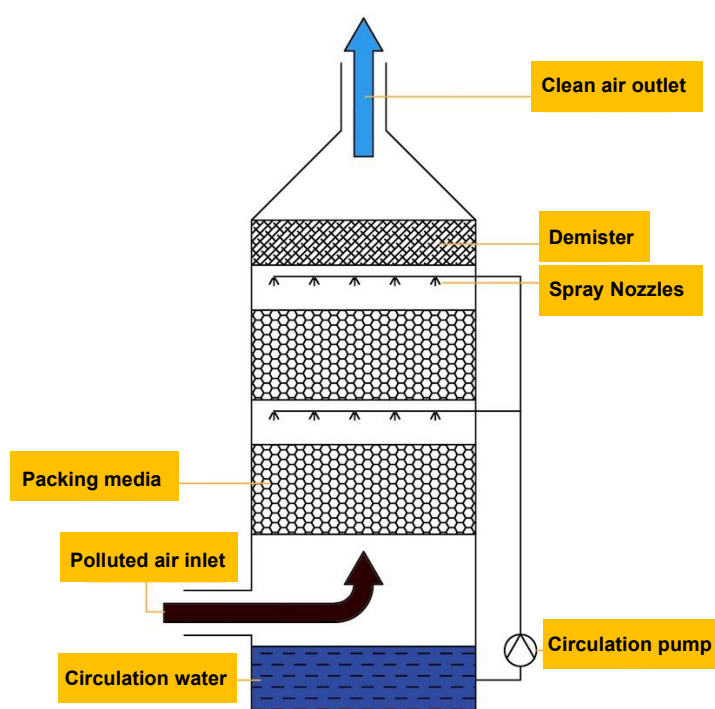
- A. Product special atomizing nozzle will atomize liquid, gas-liquid exchange area is large, high cleaning rate;
- B. Thickening treatment, external pressure strength;
- C. Special water pump, simple structure and easy to operate;
- D. Fast heating speed, good uniform use effect when heated;
- E. Selection of excellent material, chemical anti-corrosion, long service



Applications

- All kinds of harmful gases such as: H_2S , SO_x , NO_x , HCl , NH_3 , Cl_2 gas treatment
- Deodorizer for refuse transfer station or sewage treatment plant
- Process exhaust treatment for semiconductor photo electricity industry
- Incinerators and industrial furnaces, etc
- Sulfuric acid, hydrochloric acid, nitrogen oxide, hydrogen sulfide, hydrofluoric acid and other gas treatment

Working Principle



The exhaust gas is introduced into the purification tower by the wind pipe. Through the packing layer, the exhaust gas and the absorption liquid are fully exposed to the absorption and neutralization reaction of the gas-liquid two phase. After the exhaust gas is purified, the fan is discharged into the atmosphere by the dehydration of the mist removal plate and the mist eliminator. The absorption liquid is pressurized by the pump at the bottom of the tower and then sprayed down at the top of the tower.

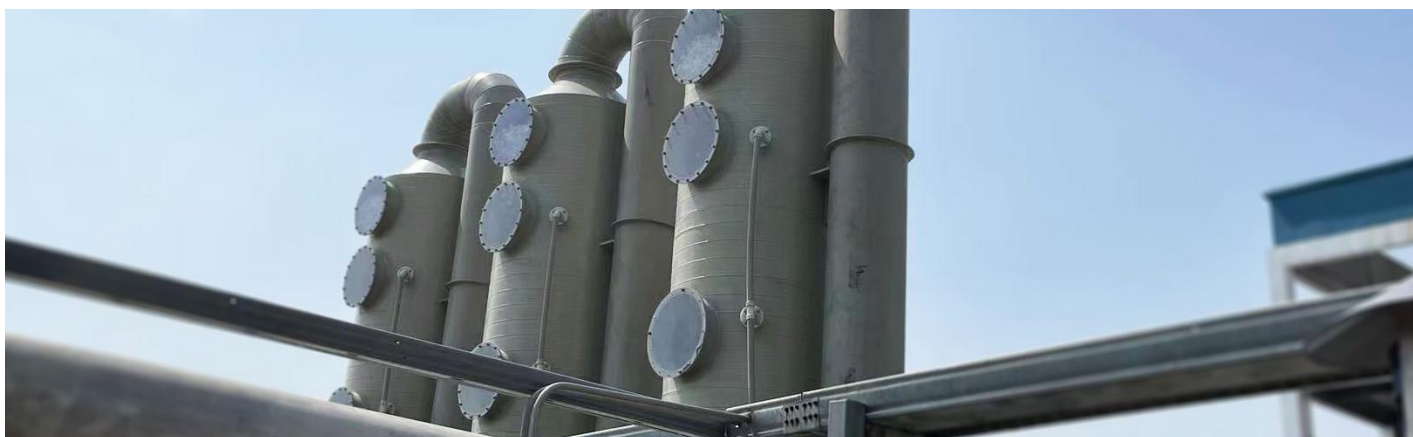
Finally, it is recycled to the bottom of the tower for recycling. The purified acid mist exhaust gas is lower than the national emission standard.



Model Selections

No.	Model	Gas Treatment Capacity		*Diameter (mm)	Height (mm)	Material	Packing
		<i>m³/h</i>	<i>CFM</i>				
1	BIO-S600	0-600	<i>0-350</i>	400	5500	FRP/PP/PPH/S S	Polyhedral ball/ Pall ring/bio-cub e
2	BIO-S1500	600-1500	<i>350-900</i>	600			
3	BIO-S2500	1500-2500	<i>900-1500</i>	800			
4	BIO-S4000	2500-4000	<i>1500-2300</i>	1000			
5	BIO-S6000	4000-6000	<i>2300-3500</i>	1200			
6	BIO-S8000	6000-8000	<i>3500-4700</i>	1400			
7	BIO-S16000	8000-10000	<i>4700-6000</i>	1600			
8	BIO-S18000	10000-13000	<i>6000-7600</i>	1800			
9	BIO-S20000	13000-17000	<i>7600-10000</i>	2000			
*Remarks: To reduce shipping cost, scrubber sizes are designed according to container loading							





**“ We only have one earth, Let’s take care of it.
Wastewater effluent and odorous gas emission must
be treated before discharging back to the
environment.
”**

CONTACT US

WUXI QIUYUAN ENVIRONMENTAL ENGINEERING CO., LTD.

Zhoutie Town, Yixing City, Jiangsu Province, China

TEL: +86-510-87888758

MOBILE: +86-13884306400

EMAIL: sales@bioetp.com

